

How To Purchase e-DECA

*an online assessment & planning software
for infants, toddlers, & preschoolers*

First, you must purchase an annual license.

Each program pays \$249.95 each year for use of the e-DECA system. This item is #16701, and it must be purchased through a Kaplan sales representative or the Kaplan web site. Please note that even you have multiple sites within your program, you only need to purchase one license!

Next, how many ratings will you do on each child throughout the year?

If you are doing three or fewer ratings per child per year, you should choose the Single Rating Option. If you are doing more than three ratings per child per year, you should choose the By Child Option. Count parent and teacher ratings separately!

If you have chosen the Single Rating option...

Order the appropriate numbers of ratings based on how many assessments will be completed throughout the year. For example, if teachers do a "pre" and a "post" rating (2 ratings total) on 500 children in the entire program, order 1000 Single Ratings (500 children times 2 ratings per child). When ordering, you may also choose the optional Conscious Discipline strategies!

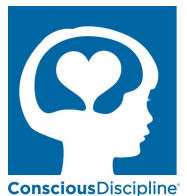
- *e-DECA V2 Single Rating Option* - Item #26399 - \$1.00 Per Rating
- *Conscious Discipline e-DECA Single Rating Option* - Item #29259 - \$1.50 Per Rating

If you have chosen the By Child option...

Order the appropriate numbers of ratings based on how many assessments will be completed throughout the year. For example, if 600 children are in your entire program but only 500 will be assessed, order 500 By Child Options.

When ordering, you may also choose the optional Conscious Discipline strategies!

- *e-DECA 2.0 By Child Option* - Item #29519 - \$2.95 Per Child
- *Conscious Discipline e-DECA By Child Option* - Item #29519 - \$4.50 Per Child



Finally, ensure you have made a two-part purchase:

1) the annual license & 2) your ratings!



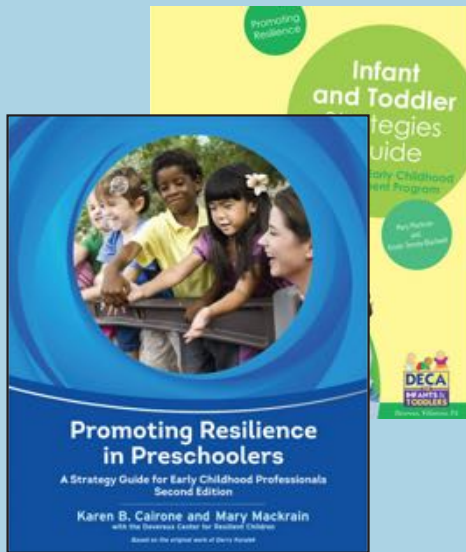
CENTER FOR
RESILIENT CHILDREN

Need further assistance purchasing?
Call Rich at (610) 542-3095 or e-mail rrinaldi@devereux.org

Suggested Resources

These resources, while not required for e-DECA users, will support your implementation of the program!

Strategies for Teachers



This resource offers early childhood professionals research-based strategies to enhance children's social and emotional health, as well as checklists and tips for improving the overall quality of programs.

We suggest one per classroom.

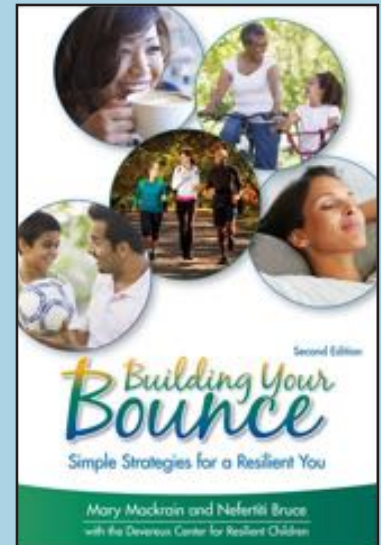
Strategies for Parents



This helpful booklet gives family-friendly information on promoting a child's social and emotional growth at home. Specific parent strategies are available for infants/toddlers as well as preschoolers.

We suggest one per family.

Building Your Bounce: An Adult Resilience Journal



This collection of simple strategies helps adults build their own resilience. Full of reflection opportunities, it includes a survey that offers caregivers and parents a tool to monitor their personal social and emotional health.

We suggest one per teacher.

Your Journey Together

Your Journey Together (YJT) is a strength-based curriculum designed to promote the social and emotional well-being and resilience of vulnerable children and their families. The

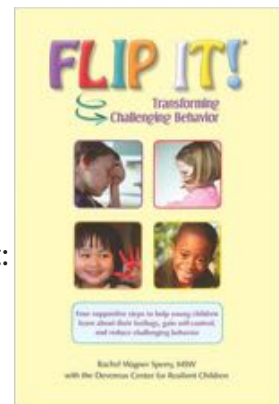
YJT curriculum focuses on empowering parents to promote safe, trusting, and healing environments. This product is exclusively available at www>YourJourneyTogether.org. **We suggest one per professional serving families in the home setting.**



FLIP IT

Transforming Challenging Behaviors

FLIP IT® offers four simple and effective steps to transform challenging behavior in young children. Teachers and parents can help children learn about their feelings and gain self-control by using the mnemonic: Feelings, Limits, Inquiries, and Prompts. **We suggest one per classroom.**



Want professional development for DECA?
Call Debi at (610) 574-6141 or e-mail dmahler@devereux.org